

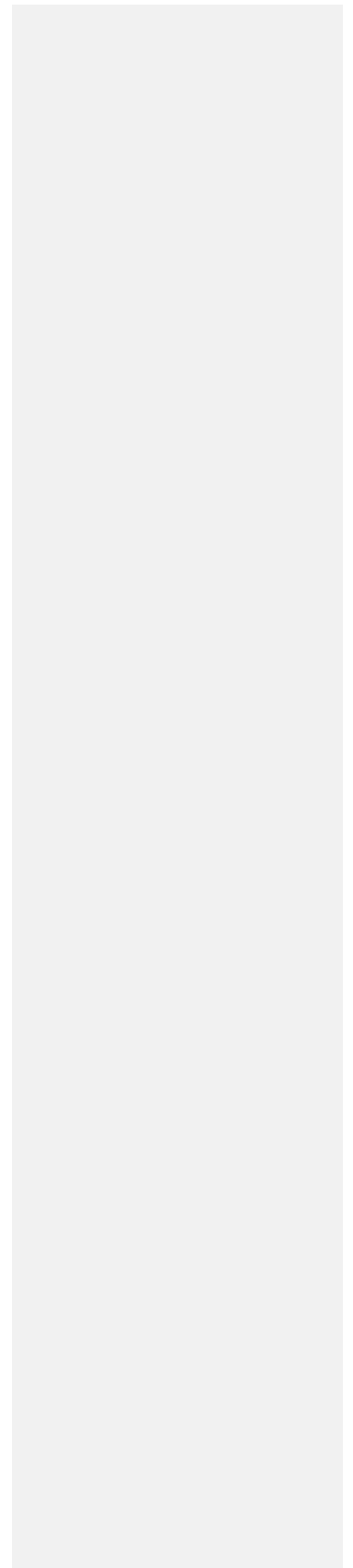


**Magic Control Technology Corporation**

# **Android Mirror**

## **KM-C6105**

User Manual



## Table of Contents

<b>Features .....</b>	<b>3</b>
<b>Specifications .....</b>	<b>3</b>
<b>Getting Started .....</b>	<b>4</b>
<b>Windows 7 / XP - First Time Installation .....</b>	<b>4</b>
<b>Windows 7 – Start the Andriod Mirror program.....</b>	<b>5</b>
<b>Windows XP – Start the Andriod Mirror program .....</b>	<b>7</b>
<b>Functions.....</b>	<b>9</b>

## Features

- ✧ Display an Android device screen on a Windows Computer desktop
- ✧ The Android device screen will be magnified and rotated on the Windows Computer desktop.
- ✧ The computer's full-size physical keyboard and mouse can be used for the Android device.
- ✧ Data transfer through file manager in PC while connected.
- ✧ Battery charging for Android Device under
- ✧ The user will be notified on the computer of all incoming calls and messages.
- ✧ Capture the screen of the Android device and directly save it on the PC.
- ✧ Video display is only supported on Android 4.0 up
- ✧ Compatible with Android OS 2.3 x & 4.0 and up

## Specifications

<b>Interface</b>	
Interface	USB 2.0 A-type to MicroB Connector
USB Cable	Cable: 120cm
<b>Power</b>	
Power Mode	Bus-powered
<b>Physical Specification</b>	
Housing Material	ABS
LED	Link Indicator blue LED
Dimensions	Main body: 19(W)x 10.5(H)x 59( L) mm
Weight	Approximately 20 g
Transfer Rate	Up to 480 Mbps transfer rate
<b>System Requirements</b>	
PC / Laptop	OS: Windows 8, 7, Vista, XP(32-bit or 64-bit) CPU: Intel Pentium II Processor or later RAM: 512MB RAM or higher Available USB 2.0 port (USB 2.0 is recommended)
Android	OS: 2.3 / 4.0 Available Micro USB port Please check full list online: <a href="http://www.mct.com.tw">www.mct.com.tw</a>
<b>Package Contents</b>	
<ul style="list-style-type: none"> <li>✧ Android Mirror (KM-C6105)</li> <li>✧ User Manual</li> </ul>	

← 格式化表格

← 格式化表格

← 格式化表格

← 格式化表格

← 格式化表格

## Getting Started - First Time Installation

### Notes for before Installation


- Your PC may need a few minutes to recognize your Android device.
- Ensure you have enabled the USB Debugging mode on your Android device.
- Run the setup program as an administrator to avoid errors during the installation
- Make sure your internet connection is available
- The display screen flash flashing during installation is normal

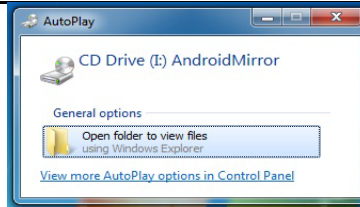
#### 1. Connect the Android Mirror to a computer.

Note: USB 2.0 port on the computer is recommended




#### 2. An “Auto Play” option window may appear. Please click on “Open folder to view files ” Double-click

CD Drive: Android Mirror the (  ) icon to start the application



#### Troubleshooting:

If auto run is not launched, go to “**Computer**”, Click on **CD drive**, and manually run the setup application by

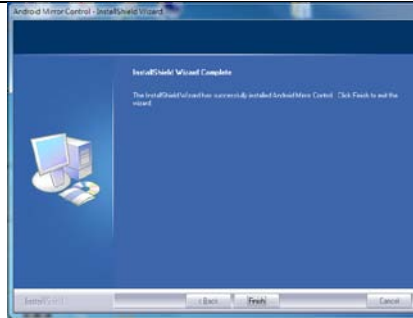
double-clicking on the  icon

#### 3. The device will start the software installation on the computer

#### Note:

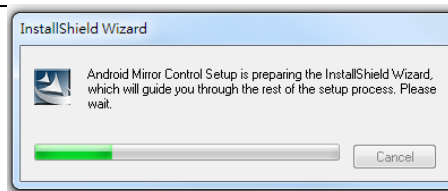
If the “**Windows Security**” window appears on the screen, choose “**Install this driver software anyway**” to continue.

If the “**User Account Control**” window appears on the screen, click “**Yes**” to continue.



#### 4. When the driver installation is complete, you will see

the  icon on the desktop.



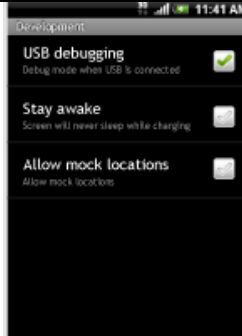
## Windows 7 – Start the Android Mirror program

1. Enable the **USB Debugging mode** on your Android device

The USB Debugging mode might be in the location below


**Android 2.x:** Go to your phone **Settings-> Applications-> Development-> Enable USB Debugging**

**Android 4.x:** Go to your phone **Setting->Developer Options-> Enable USB Debugging**



2. Connect the **Android Mirror** to a computer and an Android Device.



3. Double-click the icon  on the desktop, to launch the application.



4. If you haven't install Java, the below message will be shown. Follow the process and go to Java website to finish the **Java installation**.

**Noted:** Please make sure that your PC have connected to network.



5. After Java installation finished, Press “**Next**” to install “**USB driver onto PC**”. It will take a while to load the Mobile Phone USB driver.

**Noted:** Please make sure that your PC have connected to network.

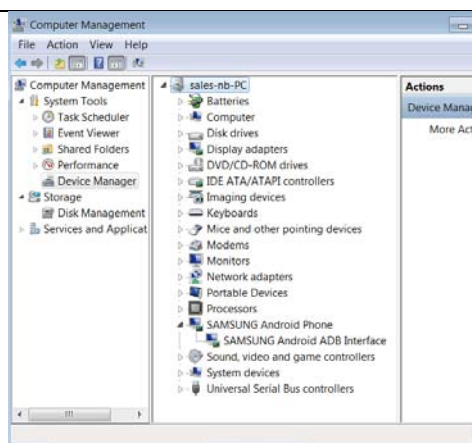


- When all installations have been completed, the screen of your Android device will be shown on the PC's desktop. Now you are ready to use!



### Trouble Shooting :

- If you are unable to load the Android Mirror program successfully, please restart your PC and Android device.
- To ensure your Android device is functioning properly follow these steps: 1. Right click on **Computer** in the Start Menu, 2. Click **Manage**,
3. Click **Device Manager**. If you do not see your Android device listed and see a warning sign under Other Devices please call our support line for help installing your phone.



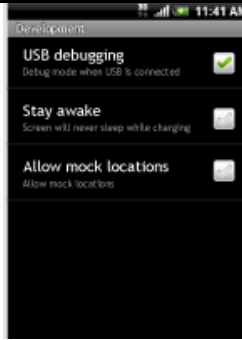
## Windows XP – Start the Android Mirror program

1. Enable the **USB Debugging mode** on your Android device

The USB Debugging mode might be in the location below

**Android 2.x:** Go to your phone **Settings-> Applications-> Development-> Enable USB Debugging**

**Android 4.x:** Go to your phone **Setting->Developer Options-> Enable USB Debugging**




2. Connect the **Android Mirror** to a computer and an Android Device.



**Noted :** if the “**Found new hardware Wizard**” appear any message , please press “ **Cancel**” , Unless you see “**Android Composite ADB interface**”



3. Double- click the icon  on the desktop, to launch the application.



4. If you haven't install Java, the below message will be shown. Follow the process and go to Java website to finish the **Java installation**.

**Noted:** Please make sure that your PC have connected to network.



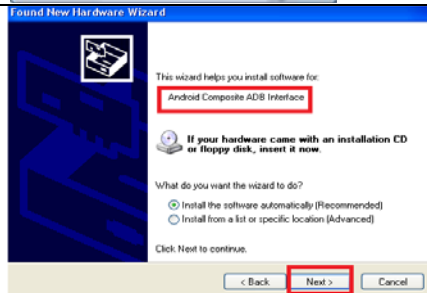
5. After Java installation finished, Press “ **Next**” to install “ **USB driver onto PC**”

It will take a while to load the Mobile Phone USB driver.

**Noted:** Please make sure that your PC have connected to network.



6. The “**Found new hardware Wizard**” might appear a message “**Android Composite ADB interface**”, Choose the “**Next**” to start the 4 th Step : **Install USB driver onto PC**

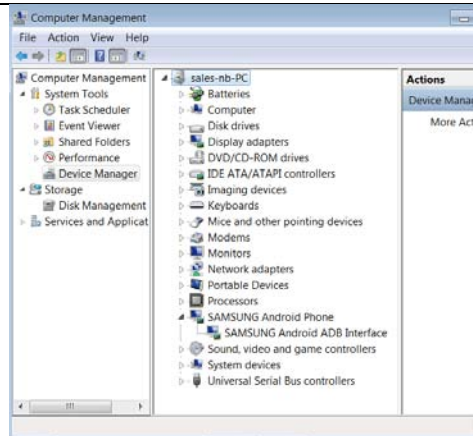


7. When all installations have been completed, the screen of your Android device will be shown on the PC's desktop. Now you are ready to use!



### Trouble Shooting :

3. If you are unable to load the Android Mirror program successfully, please restart your PC and Android device.
4. To ensure your Android device is functioning properly follow these steps: 1. Right click on **Computer** in the Start Menu, 2. Click **Manage**, 3. Click **Device Manager**. If you do not see your Android device listed and see a warning sign under Other Devices please call our support line for help installing your phone.





# Functions

## The Utility Definition



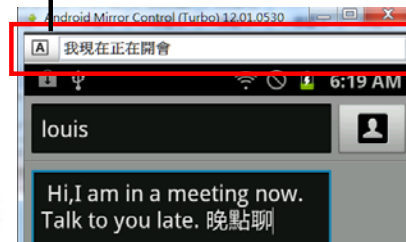
Screen Lock

- ⏻ : Screen lock/unlock key
- ⌨ : Edit short text input area
- 🏠 : Go back to the Home page
- ☰ : Menu Key
- ↶ : Go back
- 📷 : Screen capture
- 🔄 : Screen Rotation
- 🔊 🔇 : Volume down/up
- ⌨ : Edit long text input area
- ⚙ : Settings

## Mouse & Keyboard Control




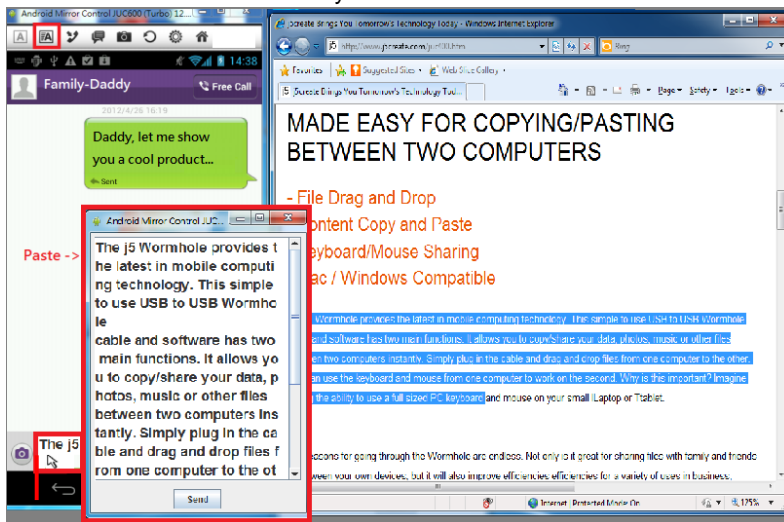
Multi-Language typing here



- Click and Slide : Act as finger touch slide behavior on mobile phone
- Left click : Act as finger touch behavior on mobile phone
- Right click : Go back to the previous page
- Keyboard typing : Click where you want to key in. Then type on the PC's keyboard.
- Input Area typing ⌨ : Language other than Roman Alphabet should be typed in the input area and press "Enter".

**Text Copy & Paste**

You can quickly “copy” text from the Windows computer and “paste” it on the **Text Windows** . The text will be on the Android mobile device instantly.



Cursor can directly point and control the mobile device

**Data Transfer & Power Charging**

Access any file from mobile device and execute it on Windows PC.

