

Index

1. Introduction.....	1
2. Installation of USB 2.0 Ethernet Adapter under Windows XP.....	2
3. Installation of USB 2.0 Ethernet Adapter under Windows Vista / 7.....	7

Introduction

Thank you for purchasing the USB 2.0 Ethernet Adapter. USB 2.0 Ethernet Adapter offers the most convenient and efficient way to connect with a laptop or desktop computer to an Ethernet network. Make the connection as easy by plugging one end of the cable into the RJ45 receptacle of the Ethernet Adapter and the other end into one port of the supporting hub. It is compliant with the USB 2.0 & 1.1 and supports 10/100Mbps Fast Ethernet.

SYSTEM REQUIREMENTS

- Ⓞ Windows XP / Vista / 7
- Ⓞ One available USB port

PACKAGE CONTENTS

- Ⓞ USB 2.0 Ethernet Adapter x 1
- Ⓞ Driver / Manual CD x 1
- Ⓞ Quick Installation Guide x 1

LED INDICATOR

- Ⓞ Green: Activity
- Ⓞ Orange: Link

NOTES:

- Ⓞ **Do not plug the USB 2.0 Ethernet Adapter into the system before the driver installation is completed.**
- Ⓞ Please refer to your Internet Service Provider (ISP) instructions to setup your Internet connection.

Installation of USB 2.0 Ethernet Adapter under Windows XP

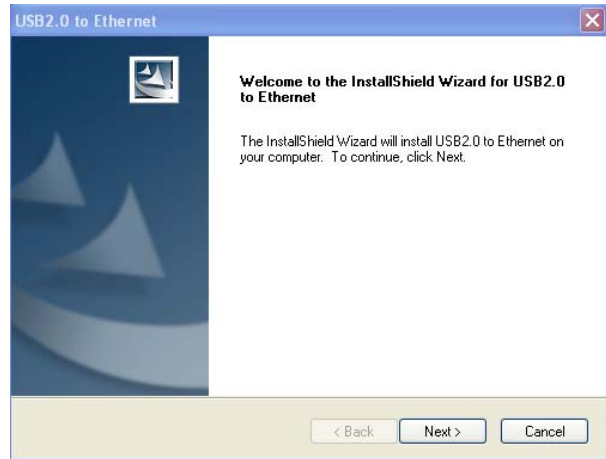
■ Software Installation

Step 1.

Insert the Driver/Manual CD to start the installation (or double click the “setup.exe”).

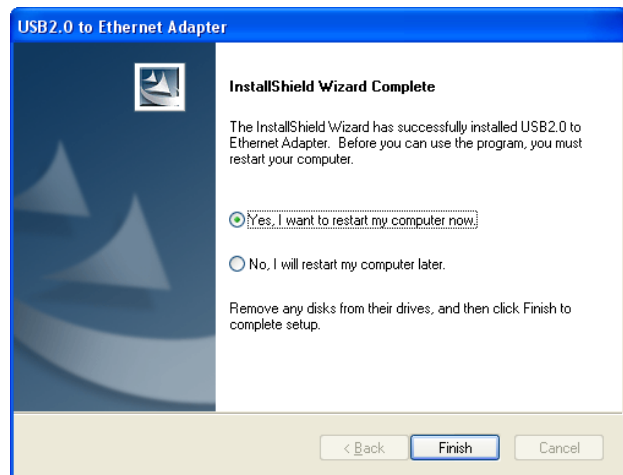
Step 2.

Click “ **Next** ” to continue.



Step 3.

Select “ **Yes, I want to restart my computer now** ” and click “ **Finish** ” to complete setup.



※ After reboot you can connect the USB2.0 Ethernet Adapter with your computer.

■ INSTALLATION CONFIRMATION

- To make sure you have installed the **USB 2.0 Ethernet Adapter** successfully, please move the cursor to **“Start”** → **“Setting”** → **“Control Panel”** → **“System”** → **“Hardware”** → **“Device Manager”**.
- Double click **“Network Adapters”** and it will show the **“LAN9500 USB 2.0 to Ethernet 10/100 Adapter (SAL10)”**.



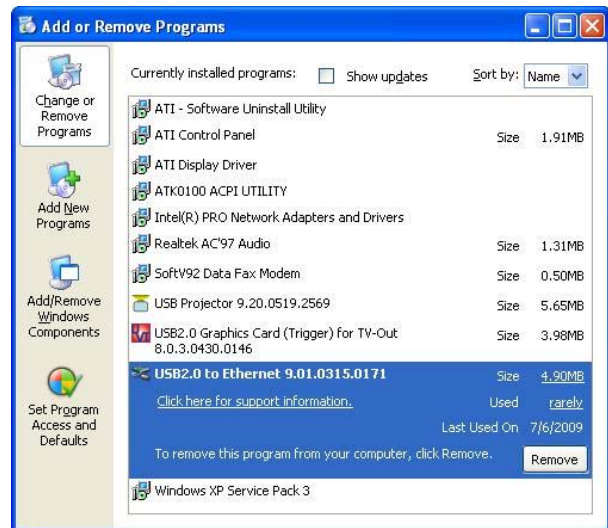
Congratulations!! You succeeded in installing the USB 2.0 Ethernet Adapter.

■ Un-installation

If you want to remove the USB 2.0 Ethernet Adapter driver, please click “ **Start** ” → “ **Control Panel** ” → “ **Add / Remove Programs** ” , then follow the procedure:

Step1.

Select “ **USB 2.0 to Ethernet 9.xx. xxxx.xxxx (driver version)** ” then click “ **Remove** ” to continue.



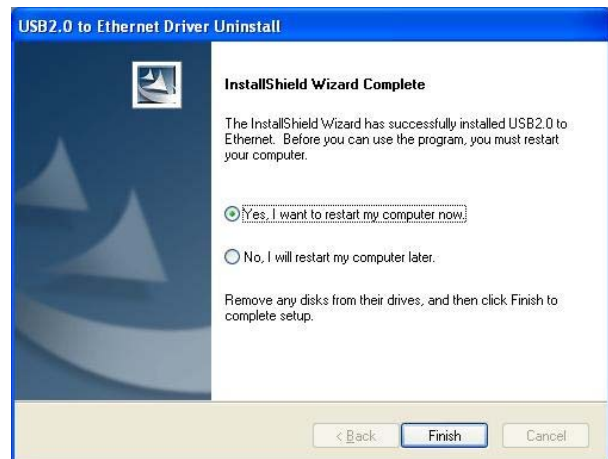
Step 2.

Click “ **OK** ” to continue.



Step 3.

Select “ **Yes, I want to restart my computer now** ” and click “ **Finish** ” to restart your computer and complete removing the USB 2.0 Ethernet Adapter driver.



Installation of USB 2.0 Ethernet Adapter under Windows

Vista / 7

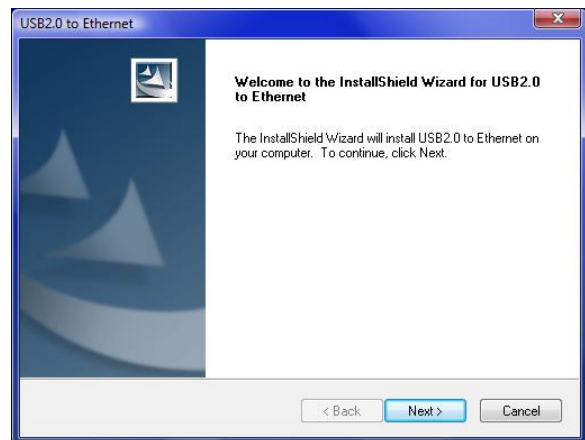
■ Software Installation

Step 1.

Insert the Driver/Manual CD to start the installation (or double click the “setup.exe”).

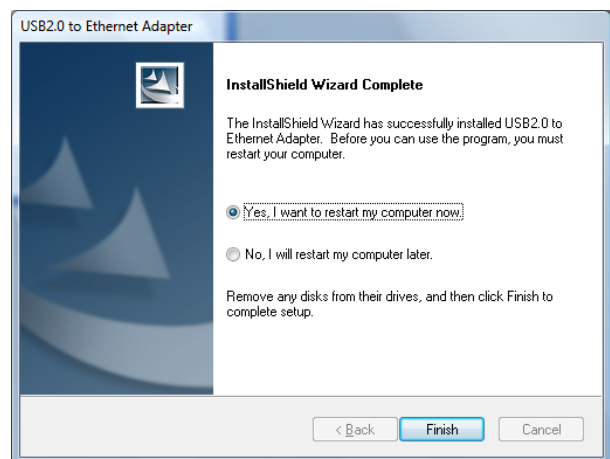
Step 2.

Click “ **Next** ” to continue.



Step 3.

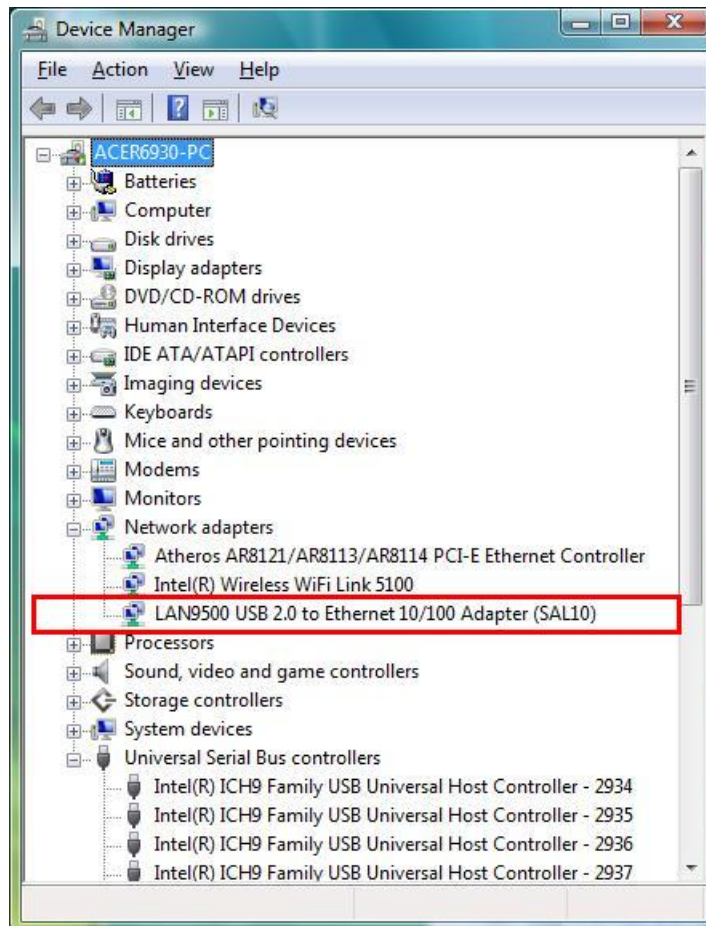
Select “Yes, I want to restart my computer now” and Click “ **Finish** ” to complete setup.



After reboot you can connect the USB2.0 Ethernet Adapter with your computer.

■ INSTALLATION CONFIRMATION

- To make sure you have installed the **USB 2.0 Ethernet Adapter** successfully, please move the cursor to “ **Start** ” → “ **Control Panel home** ” → “ **Hardware and Sound** ” → “ **Device Manager** ”.
- Double click “ **Network Adapters** ” and it will show the “**LAN9500 USB 2.0 to Ethernet 10/100 Adapter (SAL10)**”.



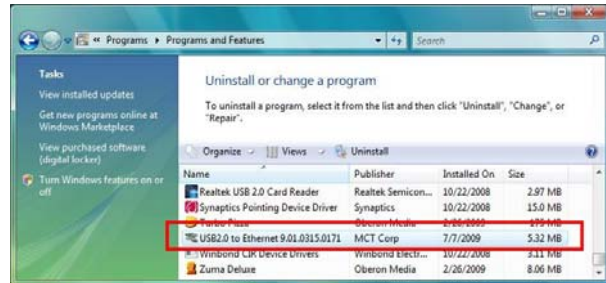
Congratulations!! You succeeded in installing the USB 2.0 Ethernet Adapter.

■ Un-installation

If you want to remove the USB 2.0 Ethernet Adapter driver, please click “ **Start** “ → “ **Control Panel** “ → “ **Programs** “ → “ **Programs and Features** “ , then follow the procedure:

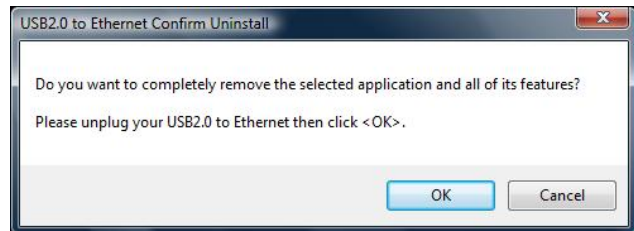
Step 1.

Select “ **USB 2.0 to Ethernet 9.xx.xxxx.xxxx (driver version)** “ then click “ **Uninstall** “ to continue.



Step 2.

Click “ **OK** “ to continue



Step 3.

Select “ **Yes, I want to restart my computer now** ” and click “ **Finish** ” to restart your computer and complete removing the USB 2.0 Ethernet .

