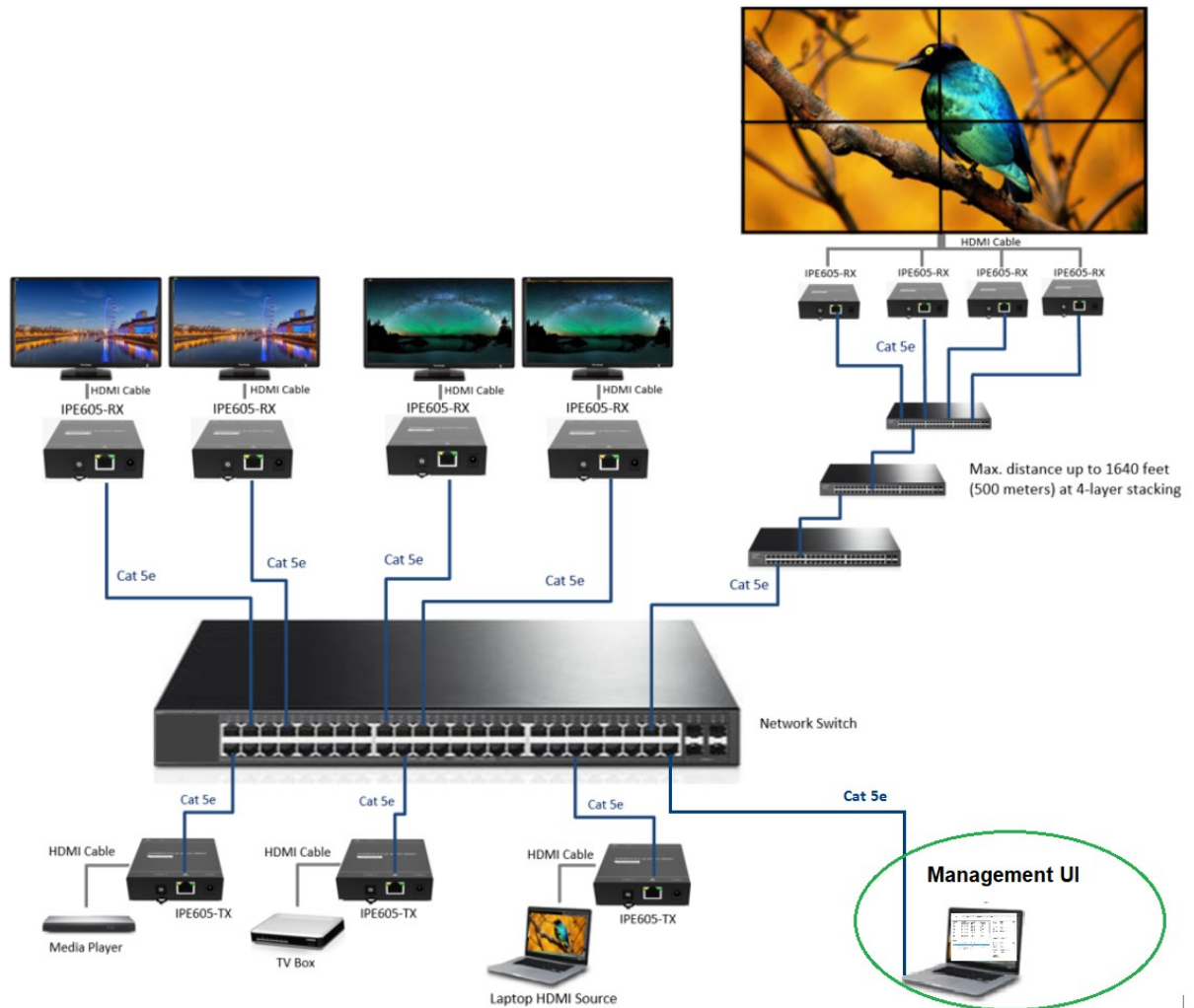


HDMI OVER GIGABIT ETHERNET EXTENDER

Management UI Quick Installation Guide

SET HDMI OVER GIGABIT ETHERNET MANAGEMENT

For Point-to-multipoint and multipoint-to-multipoint setups, connecting the IPE605-TX and IPE605-RX device LAN port via RJ-45 cable to the same local area network environment through a Router and/or Switch hub. The connection block diagram below.

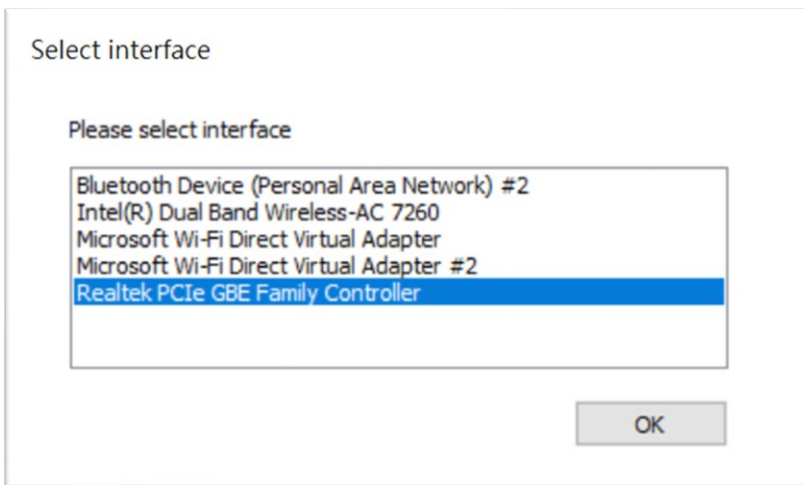


Download the management UI from the website and will see an icon “MctHoIP.exe” at the folder of the Management UI. Click the “MctHoIP.exe” to set the variety of functions associated to the HDMI over Gigabit Ethernet Management.



SELECT INTERFACE

To make sure which network device that is connected to the same local area network, then select this network device and click “**OK**” to continue.



INTRODUCTION MANAGEMENT UI

The management UI include four pages as below:

- **Device page:** Display fully detail information of Receivers and Transmitters
- **Walls page:** The Management UI provides three video wall types for easy creation of video walls.
 - “**Create new video wall**” for easy matrix setup 1x1, 1x4, 2x2, 3x3 5x5 video walls.
 - “**Create mirror wall**” Quickly set up many remote receivers while receiving a single transmitter source video image.
 - “**Create customize wall**” Quickly set up a customize video wall, you can use same size or different size of monitor to create a video wall. You can put the monitor on the video wall any position for artistic video wall.
- **Management page:** You could management all of created video walls in the page. Select or switch your video source (Transmitter) for each created video wall, you could drag the transmitters listed left and drop to video wall listed right
- **About page:** list publisher and UI version

MANAGEMENT UI - DEVICE

- Display fully detail information of Receivers and Transmitters

The page will show **Device name**, **MAC address**, **Device ID** and **State** of all Receivers and Transmitters.

You could click the Edit icon to edit **Device name** when select a Receiver or Transmitter device.

The screenshot displays the 'HDMI over Gigabit Ethernet Extender Management' interface. It features a navigation bar with 'Device', 'Walls', 'Management', and 'About' tabs. A red box highlights the 'Edit Device name' button in the top right. The main content is divided into 'Receivers' and 'Transmitters' sections, each with a table of device details and a corresponding configuration panel.

Receivers Table:

Device name	MAC address	Device ID	State
650045-4 in 1	00:05:1b:65:00:45	6619205	Init.
650069-4 in 1	00:05:1b:65:00:69	6619241	Init.
65006B-4 in 1	00:05:1b:65:00:6b	6619243	Init.
65006D-4 in 1	00:05:1b:65:00:6d	6619245	Init.
6500B0	00:05:1b:65:00:b0	6619312	Init.
6500B1	00:05:1b:65:00:b1	6619313	Init.
6500B2	00:05:1b:65:00:b2	6619314	Init.
6500B3	00:05:1b:65:00:b3	6619315	Init.
6500B4	00:05:1b:65:00:b4	6619316	Init.
6500B5	00:05:1b:65:00:b5	6619317	Init.
6500B6	00:05:1b:65:00:b6	6619318	Init.
6500B7	00:05:1b:65:00:b7	6619319	Init.

Receivers Configuration Panel (selected device: 650045-4 in 1):

- Device name : 650045-4 in 1
- Device ID : 6619205
- Channel ID : 0
- Firmware : 2019.4.10.1
- HDMI ID : 0
- Audio : On
- Serial number : 1902605R00063
- Wall name : Wall0
- Control : Hardware mode

Transmitters Table:

Device name	MAC address	Device ID	State
Youtube	00:05:1b:60:00:c7	6291655	Init.
Duck	00:1a:25:01:01:06	65798	Init.

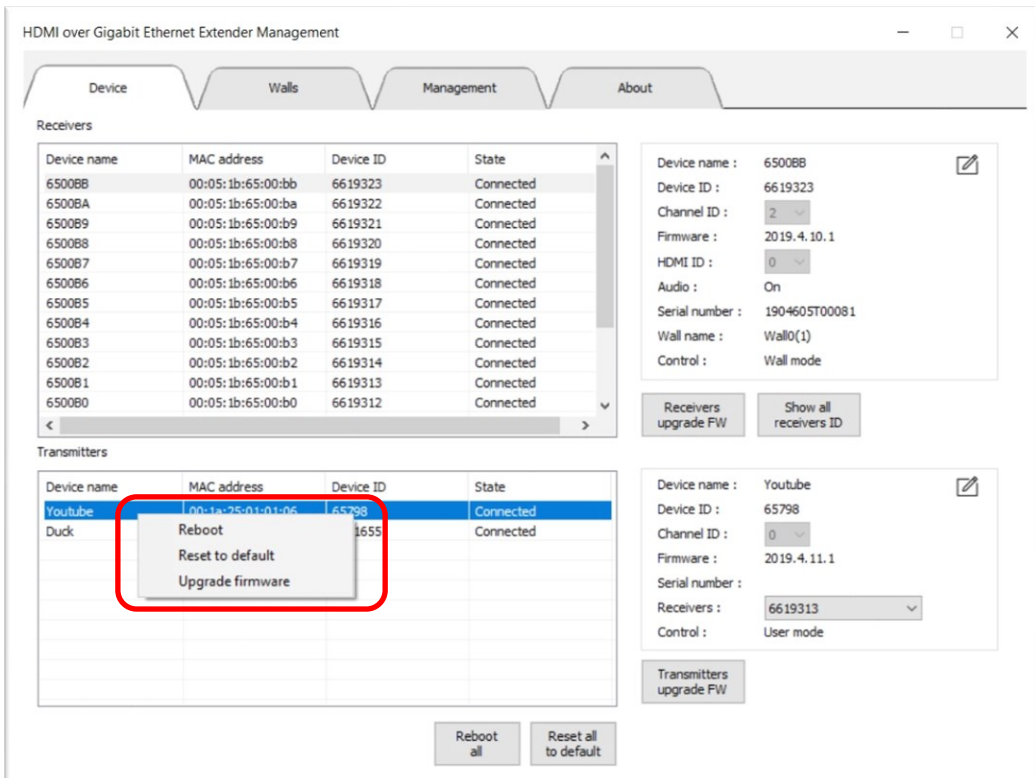
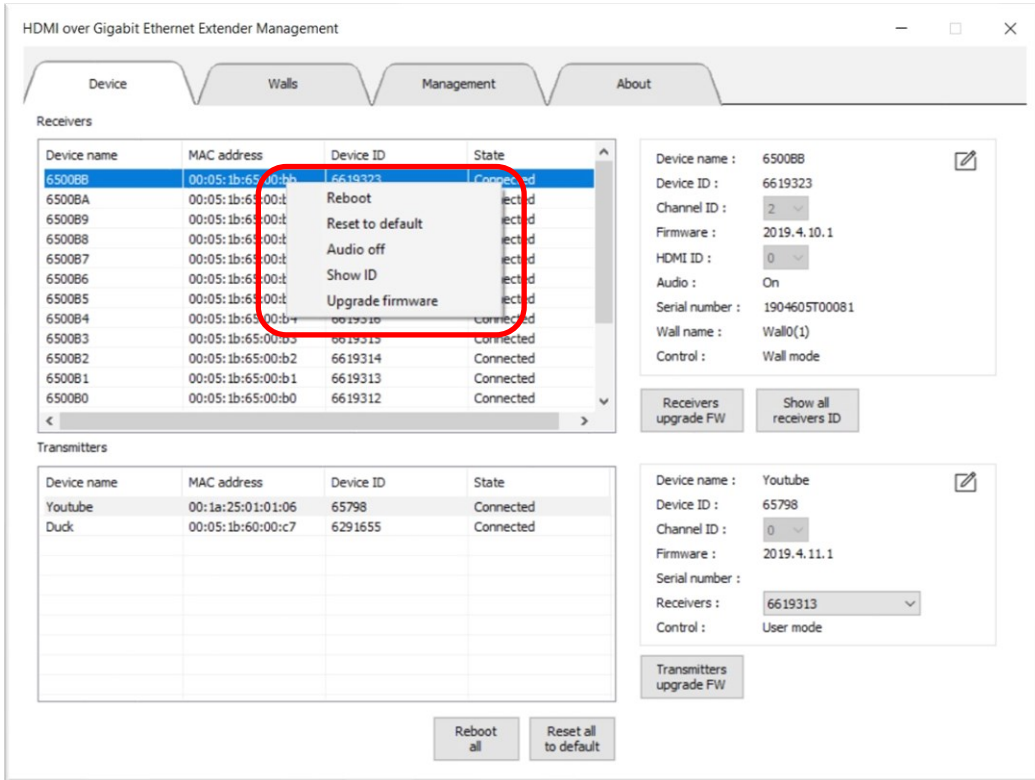
Transmitters Configuration Panel (selected device: Youtube):

- Device name : Youtube
- Device ID : 6291655
- Channel ID : 2
- Firmware : 2019.4.11.1
- Serial number :
- Receivers : 6324341
- Control : Hardware mode

Buttons at the bottom: Reboot all, Reset all to default, Receivers upgrade FW, Show all receivers ID, Transmitters upgrade FW.

Device Advance Setting

Click the right button of mouse on a device for Receivers, you could **Reboot**, **Reset to default**, **Audio On/Off**, **Show ID** and **Upgrade firmware**. Device name will be bottomed after reboot. Select **Show ID** will show the information on the display.

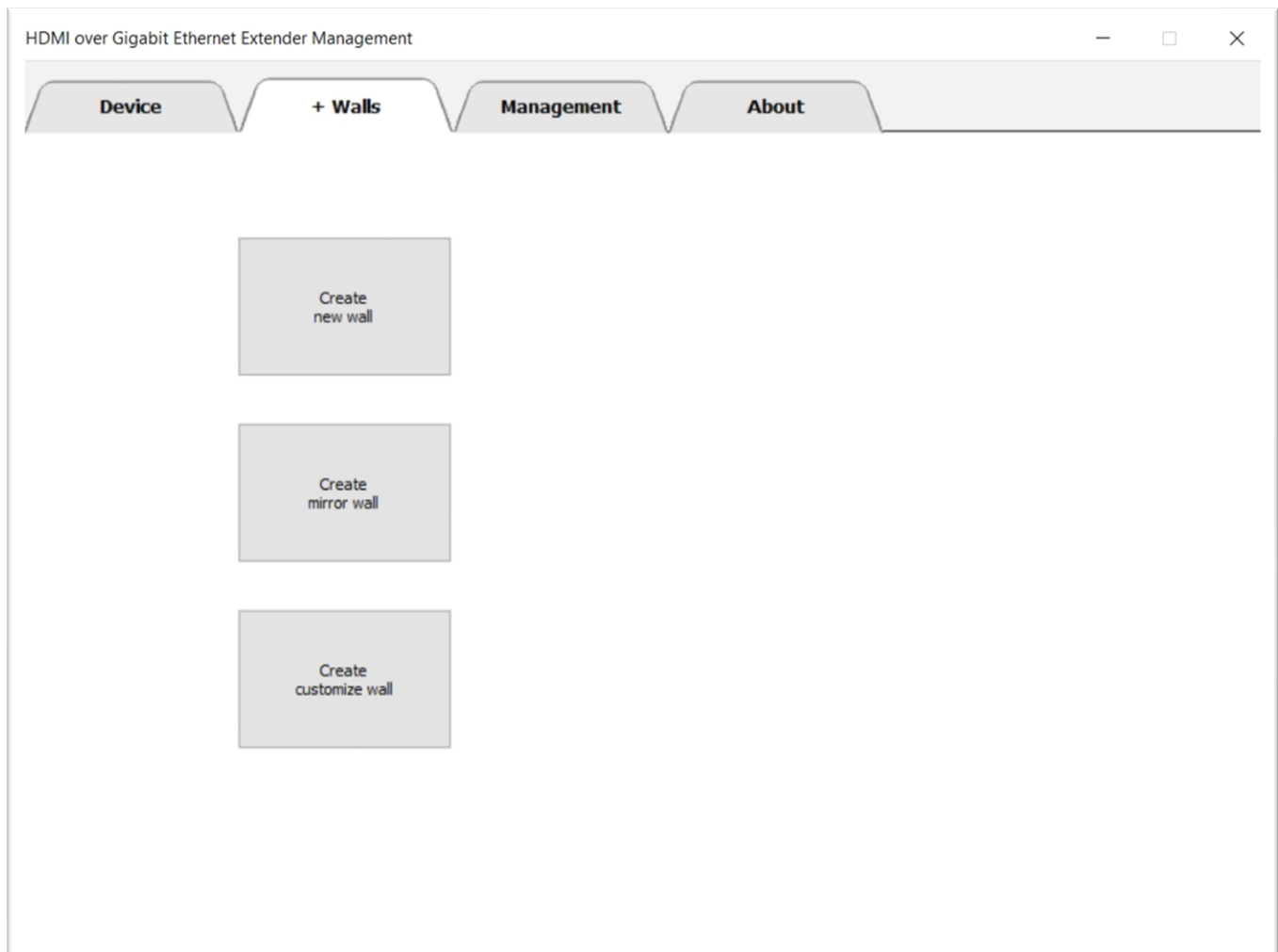


MANAGEMENT UI - WALLS

The Management UI provides three video wall types for easy creation of video walls.

- **“Create new video wall”** for easy matrix setup 1x1, 1x4, 2x2, 3x3 5x5 video wall
- **“Create mirror wall”** Quickly set up many remote receivers while receiving a single transmitter source video image.
- **“Create customize wall”** Quickly set up a customize video wall, you can use same size or different size of monitor to create a video wall. You can put the monitor on the video wall any position for artistic video wall.

Please select a type of wall creation

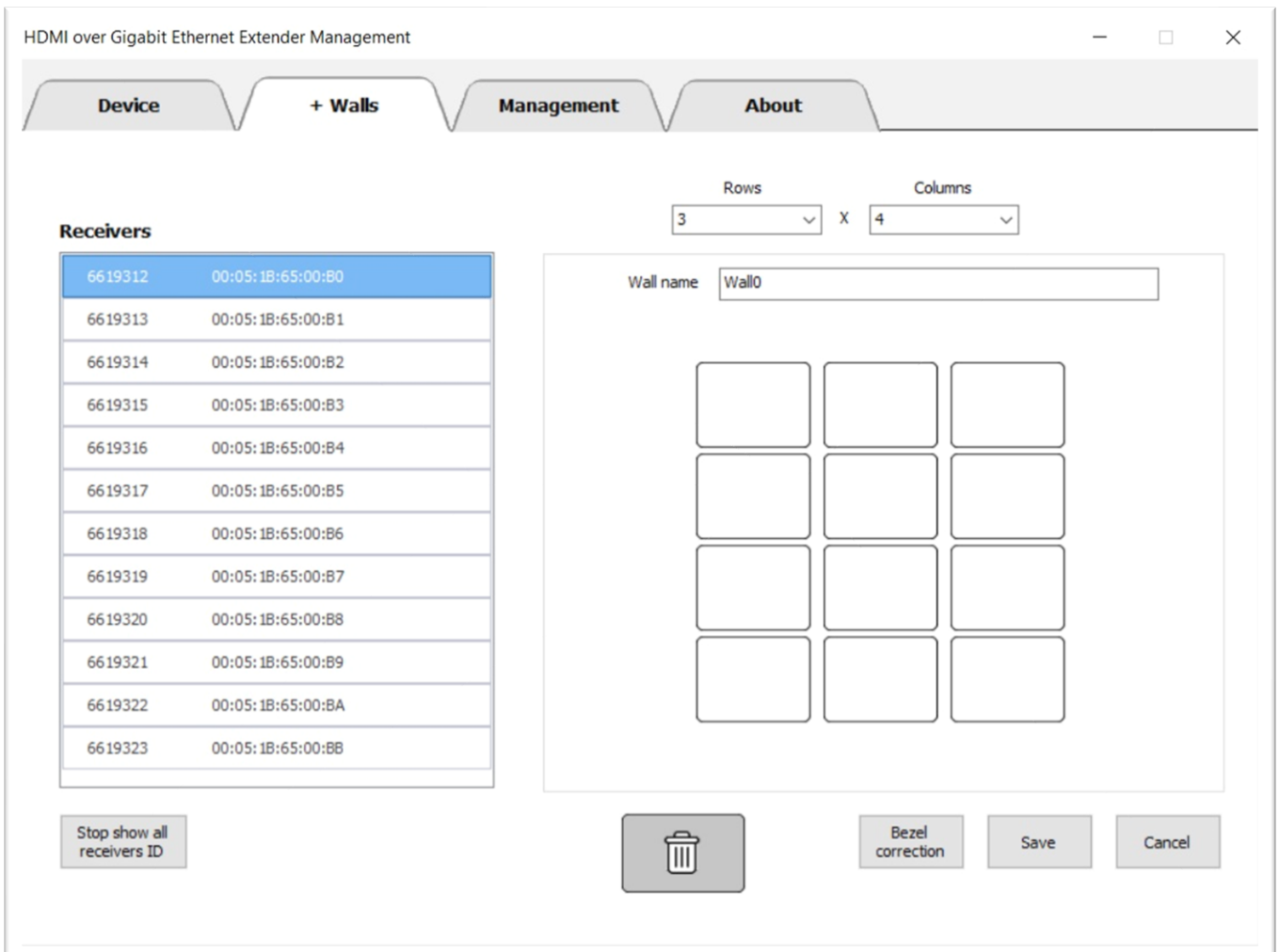


Create new wall

Select **“Create new wall “** in **“Walls”** page for easy matrix setup 1x1, 1x4, 2x2, 3x3 5x5 video wall.

Please follow the steps to create a new video wall

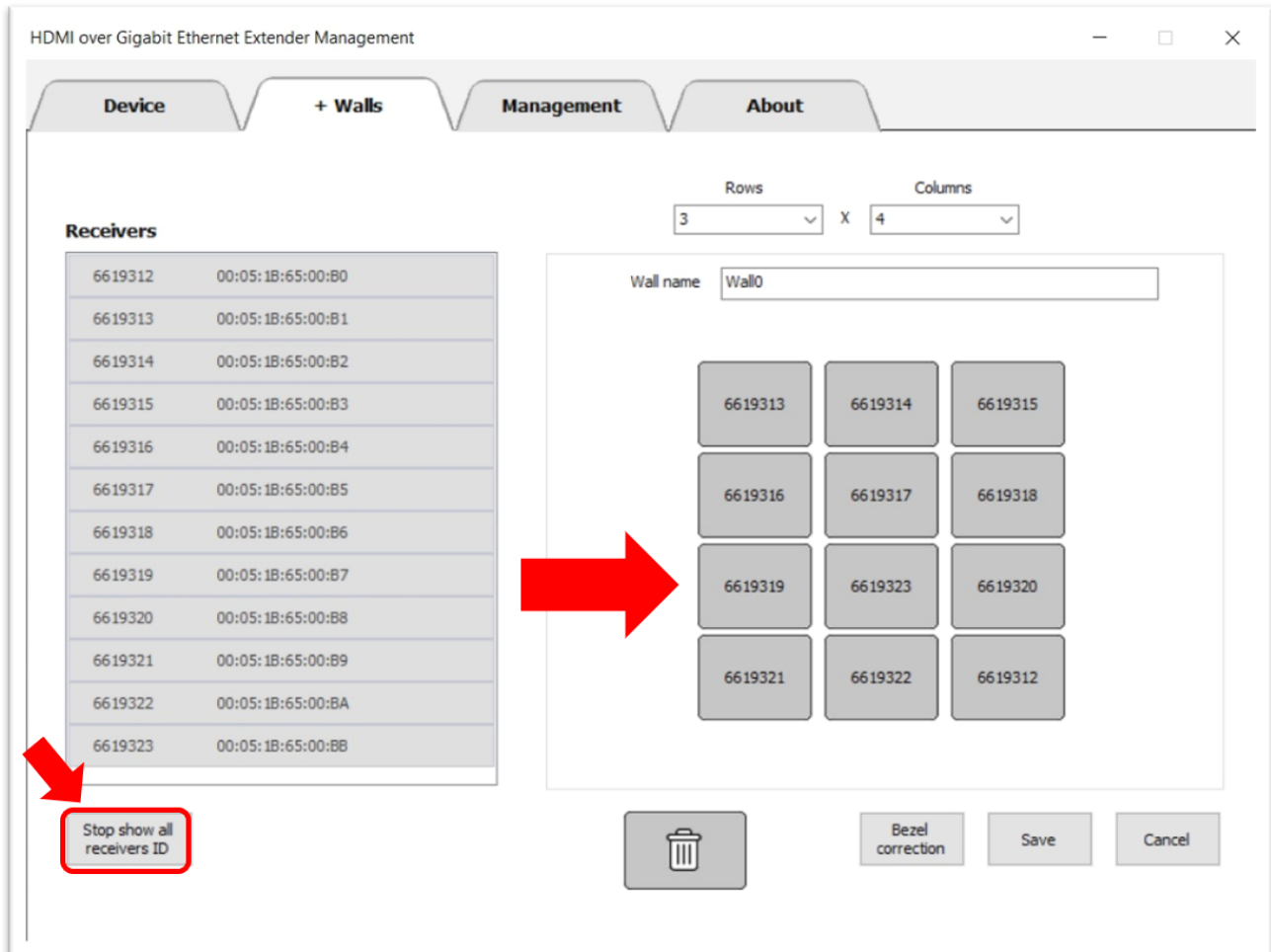
1. Select the number of **“Rows”** and **“Columns”**, then edit Wall name.
2. Click **“Show all receivers ID”**
you can easily identify which display is connected to each receiver.
3. **Set the position of every Display**
every display screen will show receivers ID. You could refer receivers ID to select and drag receivers to right positions.
4. Click **“Bezel correction”**
select **“Unit”**, adjust the width of Right side, Left side, Top side, and Bottom side.
5. **“Save”** your wall. The create video wall configuration will be listed in **“Management”** page.



SET THE POSITION OF EVERY DISPLAY

Click **“Show all receivers ID”**, every display screen will show receivers ID. You could refer receivers ID to select and drag receivers to right positions.

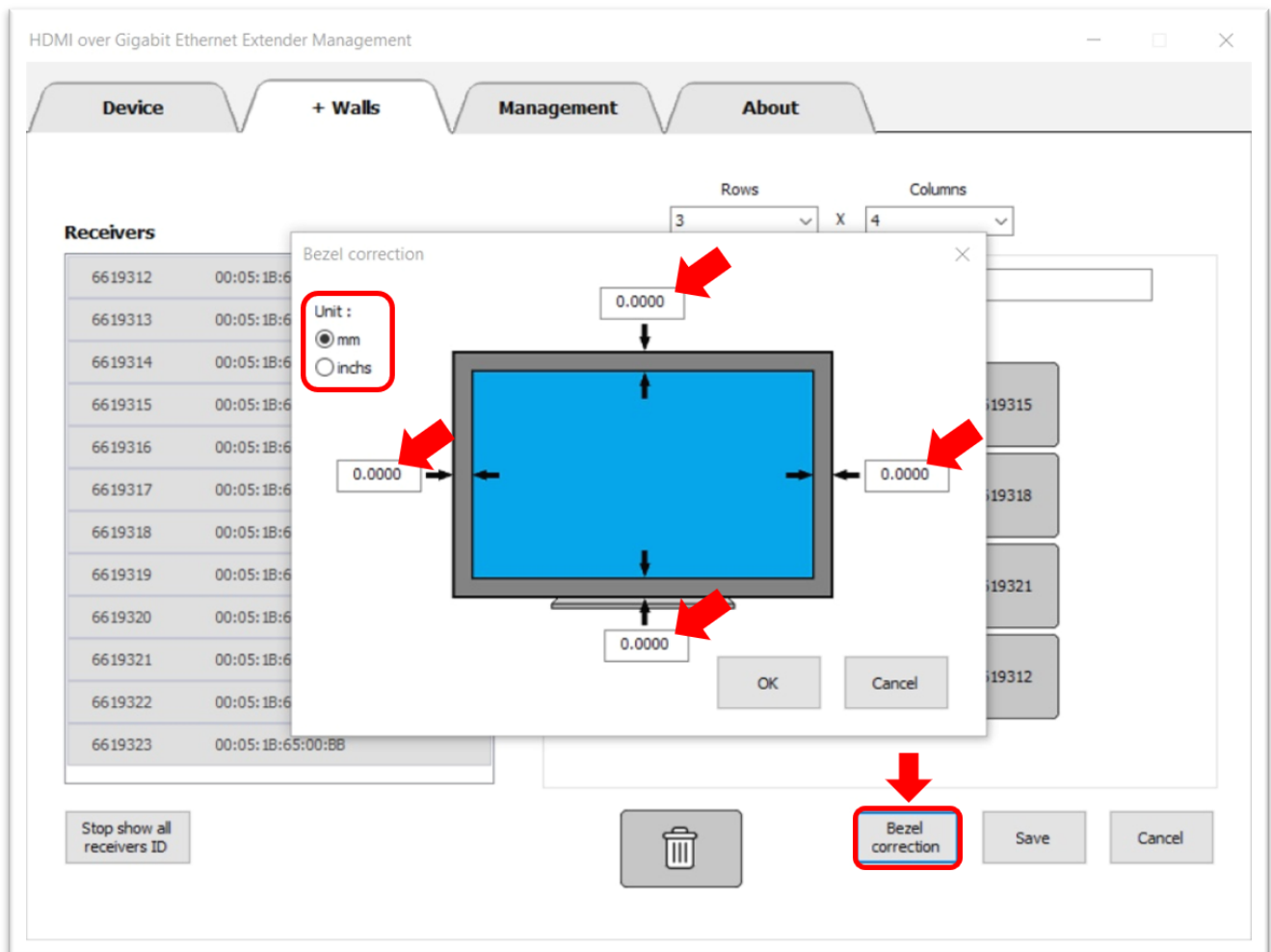
“Save” your wall. The create video wall configuration will be listed in **“Management”** page.



If the displays in your video wall configuration have large bezels, seamless look by specifying the bezel compensation. The bezel correction can compensate for this effect by cutting out the video “behind” the bezel, causing a round object to actually appear round. Click **“Bezel correction”** to open the windows.

HDMI OVER GIGABIT ETHERNET EXTENDER

On the “**Bezel correction**” windows, select “mm” or “inchs” masurements unit, adjust the width of Right side, Left side, Top side, and Bottom side the click “**OK**” save the value.

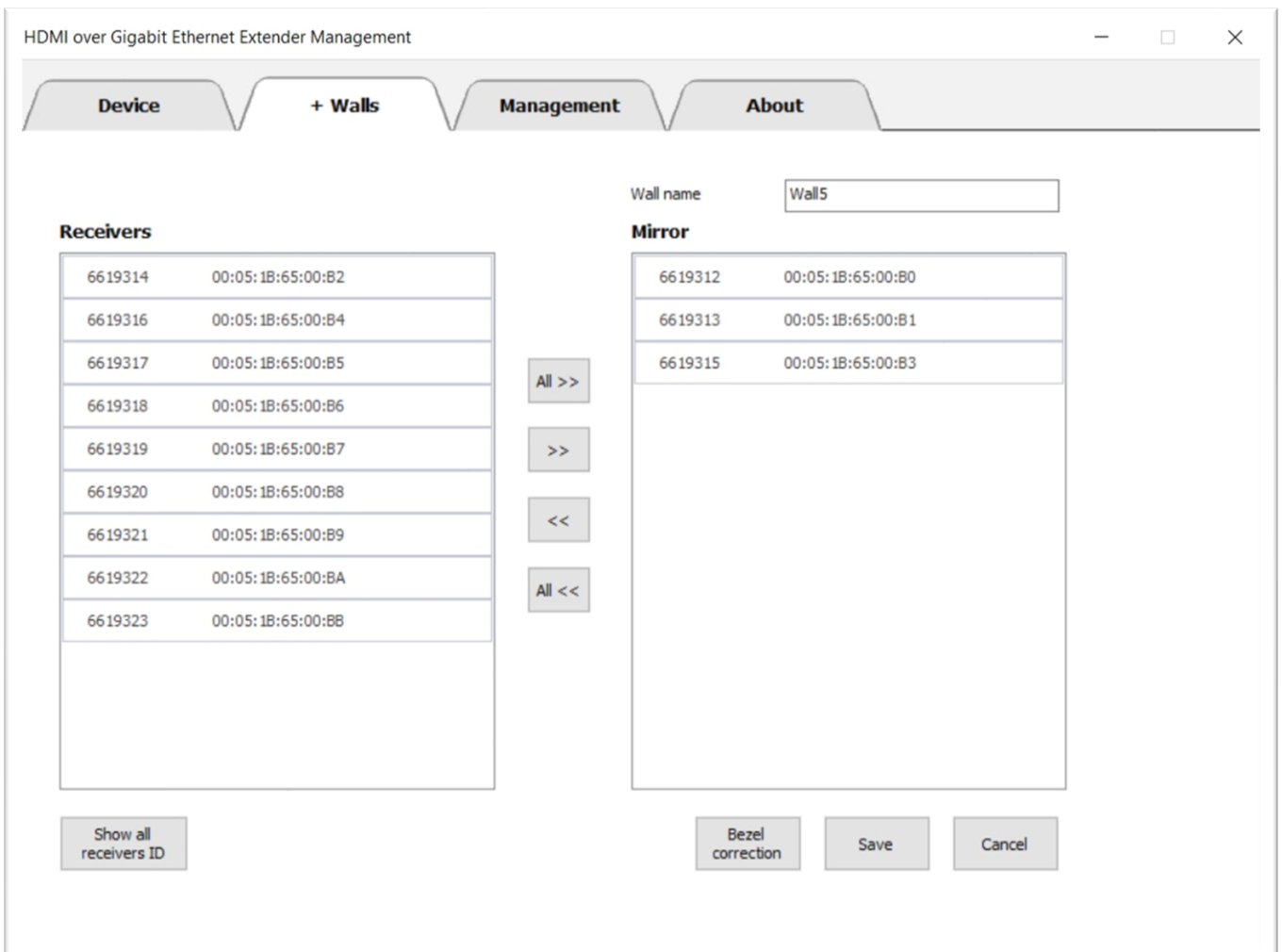


Create mirror wall

Select “**Create mirror wall** “ in “**Walls**” page for quickly set up many remote receivers while receiving a single transmitter source video image.

Please follow the steps to create a new mirror wall

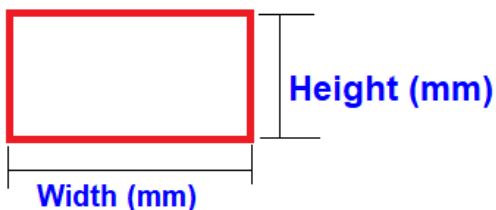
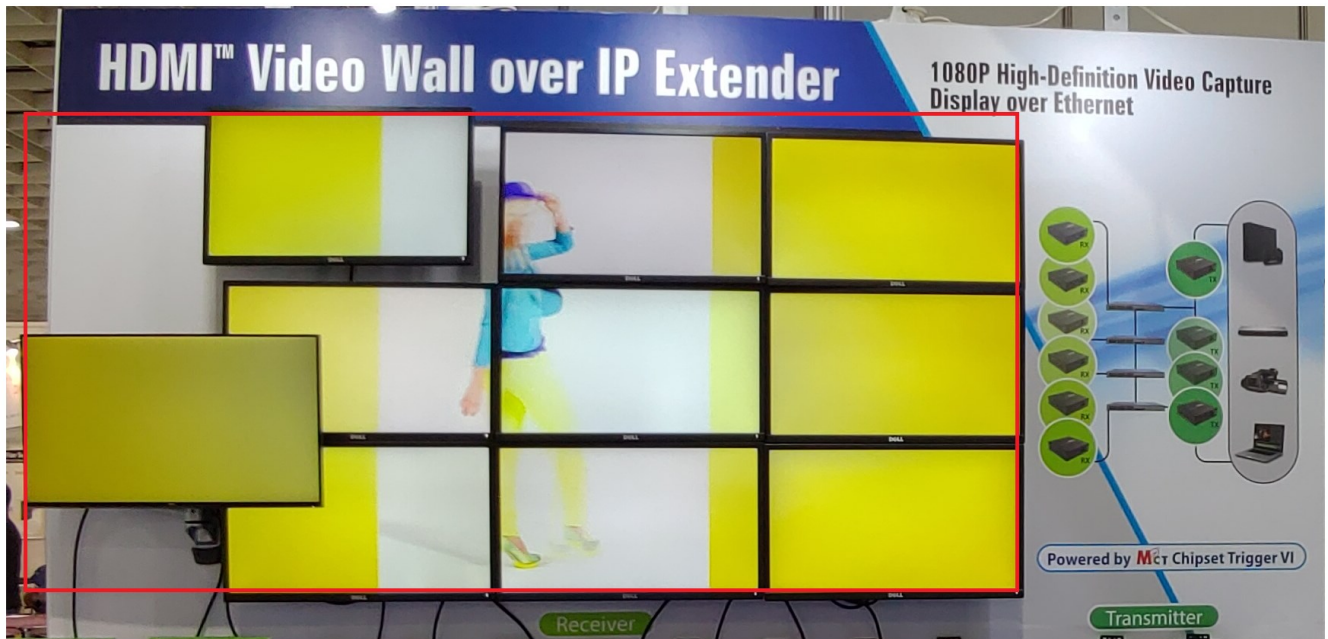
1. Edit Wall name.
2. Click “**Show all receivers ID**”
you can easily identify which display is connected to each receiver.
3. Every display screen will show receivers ID. You could refer receivers ID to select receivers and click or move them to Mirror list. You can also click or remove them from Mirror list.
4. Click “**Bezel correction**”
select “Unit”, adjust the width of Right side, Left side, Top side, and Bottom side.
5. **Save** your wall. The create video wall configuration will be listed in “**Management**” page.



Create customize wall

Select “**Create customize wall**” in “**Walls**” page for quickly set up a customize video wall, you can use same size or different size of monitor to create a video wall and put the monitor on the video wall any position for artistic video wall.

For exsample: If you want create a customize video wall as below



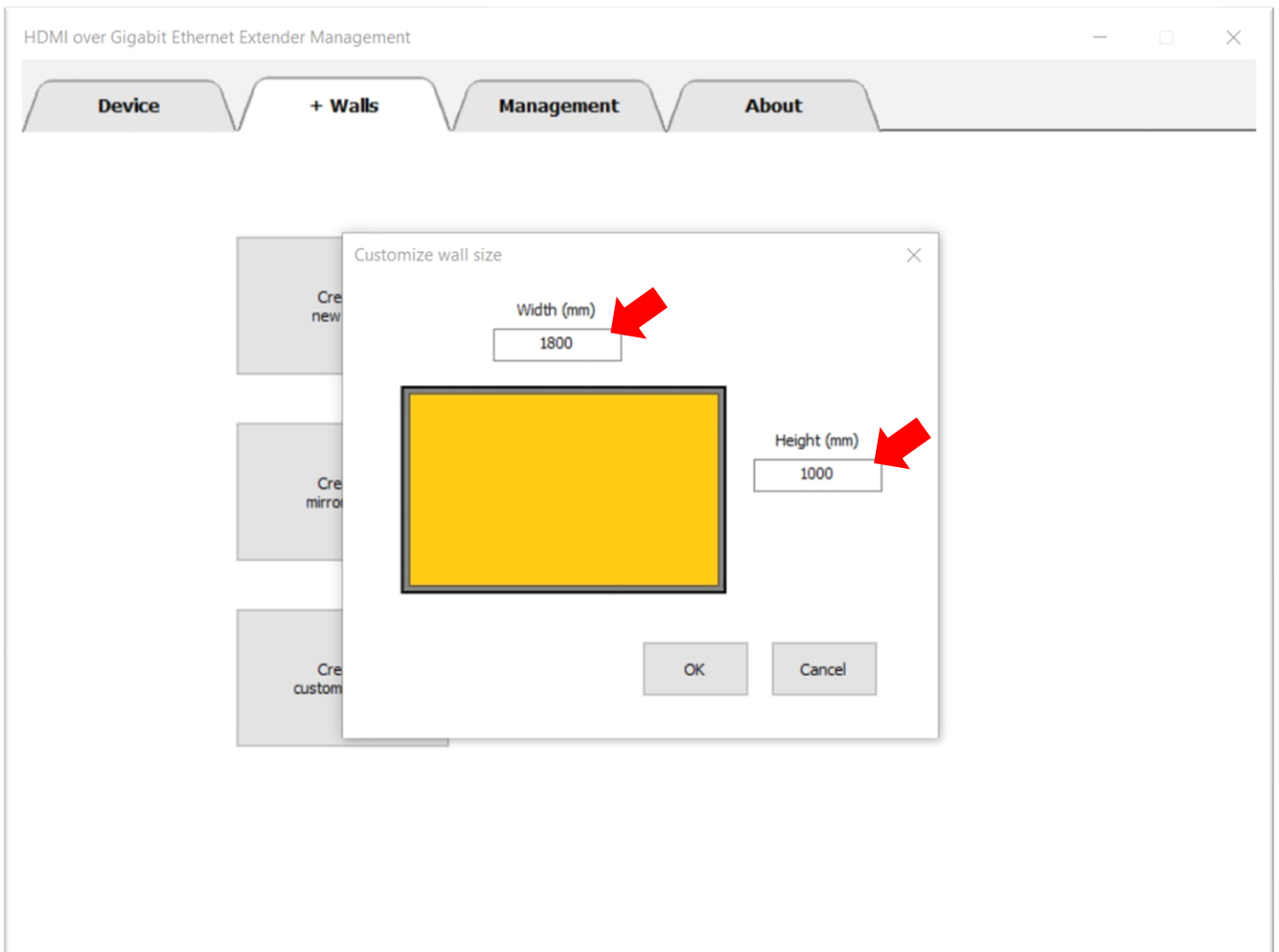
Customize wall size, enter the following measurements in millimeters (mm) didn't including monitor bezel. Please fill in the values according to the actual width and height of the video wall in “Customize wall size” wizard.

Please follow the steps to create a new customize wall

1. Fill in the values according to the actual width and height of the wall.
2. Eedit Wall name.
3. Click “**Show all receivers ID**”
you can easily identify which display is connected to each receiver.
4. **Set the position of every Display**
every display screen will show receivers ID. You could refer receivers ID to select and drag receivers to right positions. These screen positions can be located by inputting the x, y coordinates of their upper left corner. The width and height of each screen need to be confirmed and inputted.
5. “**Save**” your wall. The create video wall configuration will be listed in “**Management**” page.

FILL IN THE VALUES ACCORDING TO THE ACTUAL WIDTH AND HEIGHT OF THE WALL

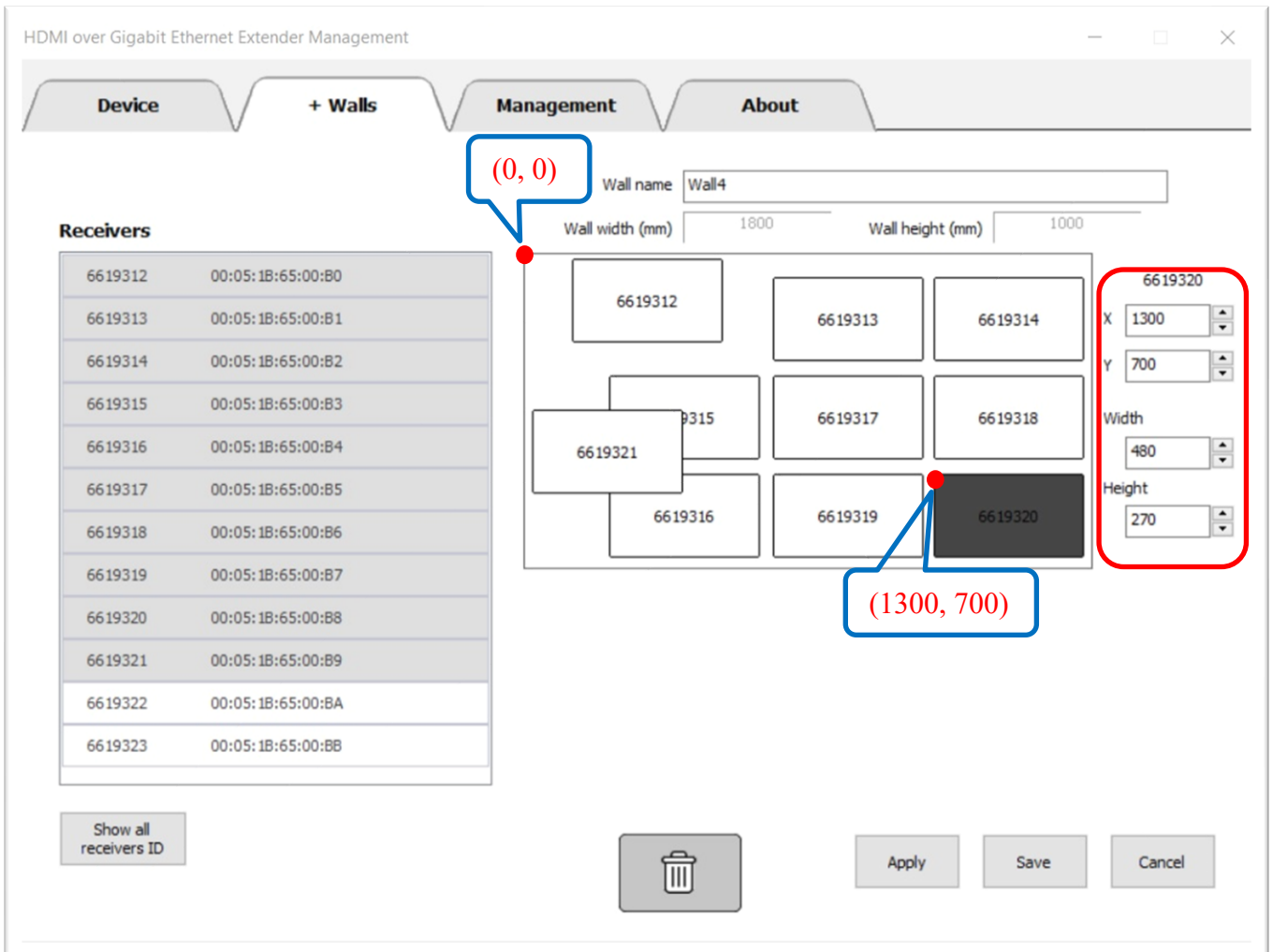
Customize video wall size, enter the following measurements in millimeters (mm) didn't including monitor bezel. Please fill in the values according to the actual width (mm) and height (mm) of the video wall, then click "OK" to next.



SET THE POSITION OF EVERY DISPLAY

Click “**Show all receivers ID**”, every display screen will show receivers ID. You could refer receivers ID to select and drag receivers to right positions. These screen positions can be located by inputting the x, y (mm) coordinates of their upper left corner. The width and height of each screen need to be confirmed and inputted. Please click “**Save**” to create a customize video wall.

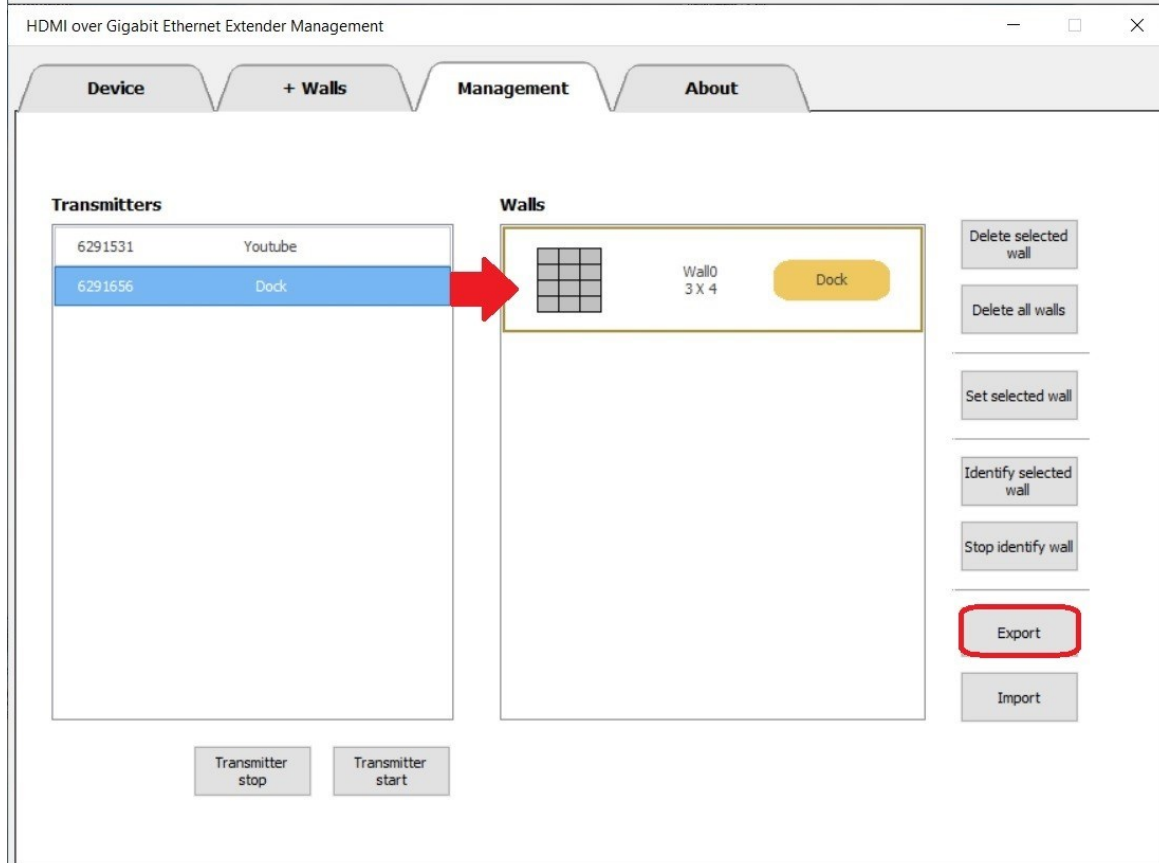
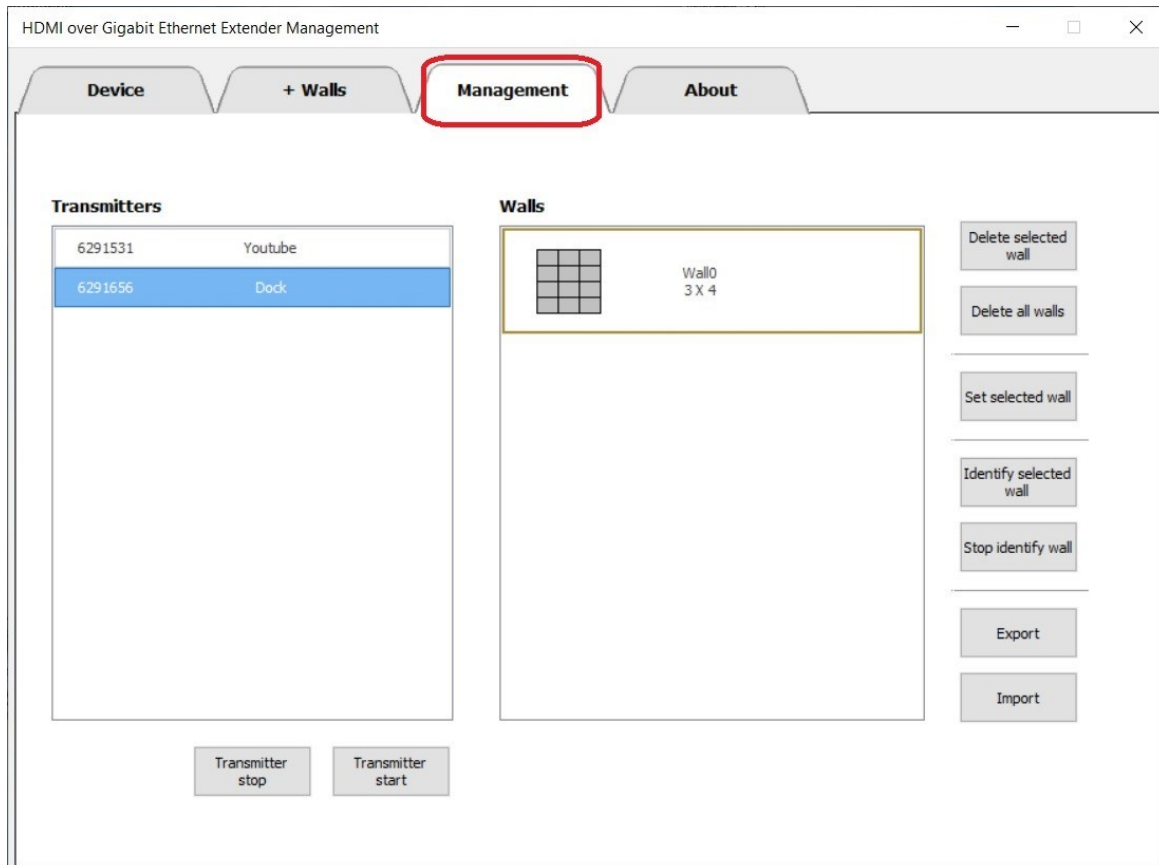
The create video wall configuration will be listed in “**Management**” page.



MANAGEMENT UI - MANAGEMENT

You can select or switch your video source (Transmitter) for each created video wall configuration.

Select and drag Transmitters listed to each created video walls configuration.



Adjust or edit video walls configuration: You can adjust or edit for each video walls configuration by double click each video walls configuration.

Delete a video wall configuration: you can delete a video wall configuration by clicking select a video wall next press “**Delete wall**” button.

Delete all of video wall configuration: you can delete all video wall configuration by press “**Delete all walls**” button.

Identify a video wall configuration: Choose the wall and click “**Identify wall**” to change the wall group to one specific color help user to identify.

Stop identify a video wall configuration: Click “**Stop identify wall**” to stop identifying.

Export all video walls configuration: You click “**Export**” button and then it saves your video wall configuration as a backup file.

Import video walls configuration: If you want to use a before good video walls configuration in the future. Please click “**Import**” button and open the video walls backup file.

The transmitter stop configuration: Choose the Transmitter in list and click “**Transmitter Stop**” to stop all the display in group and change it to black screen.

Start the transmitter configuration: Click “**Transmitter Start**” to start displaying.

ABOUT PAGE

To check the current driver version.

